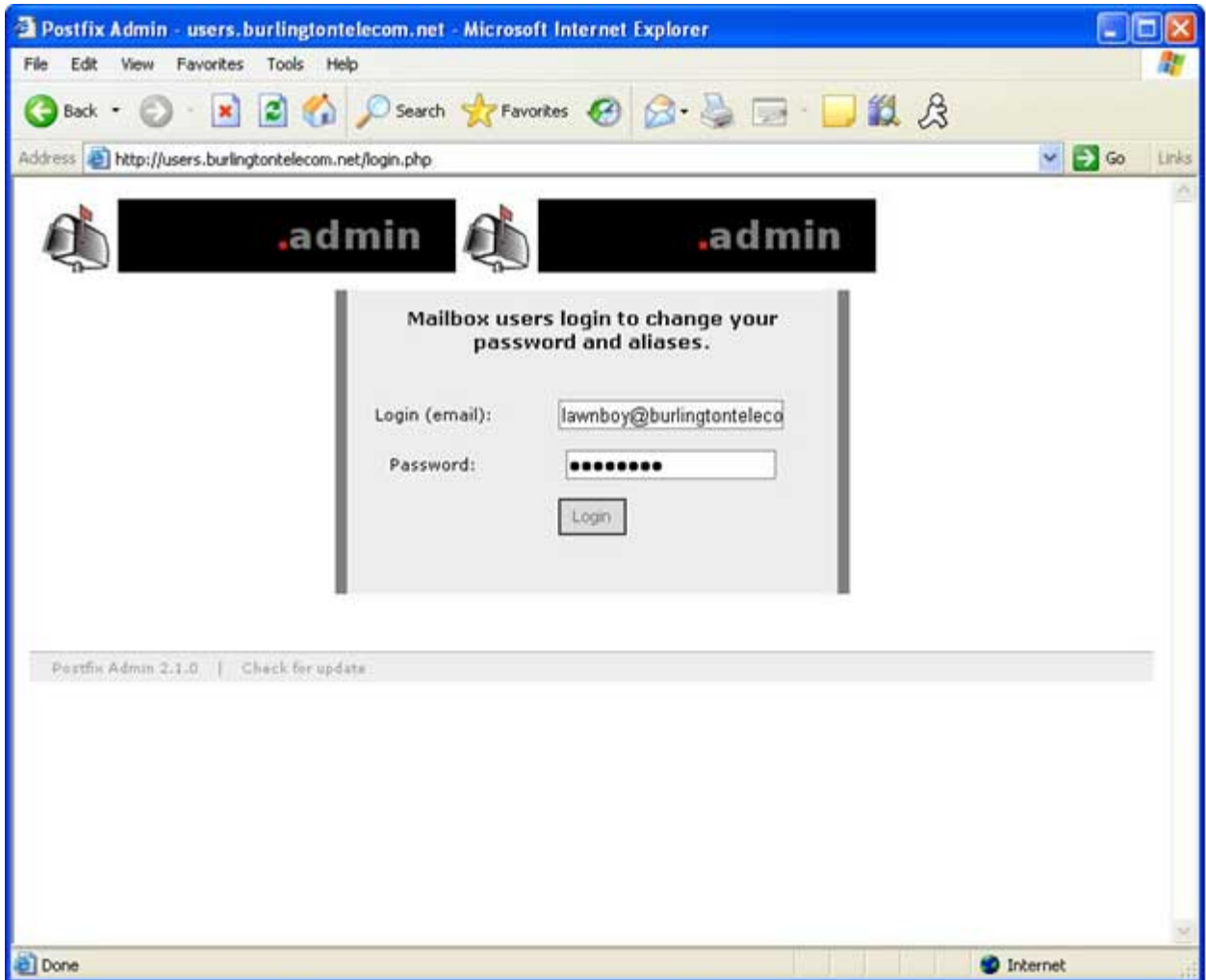
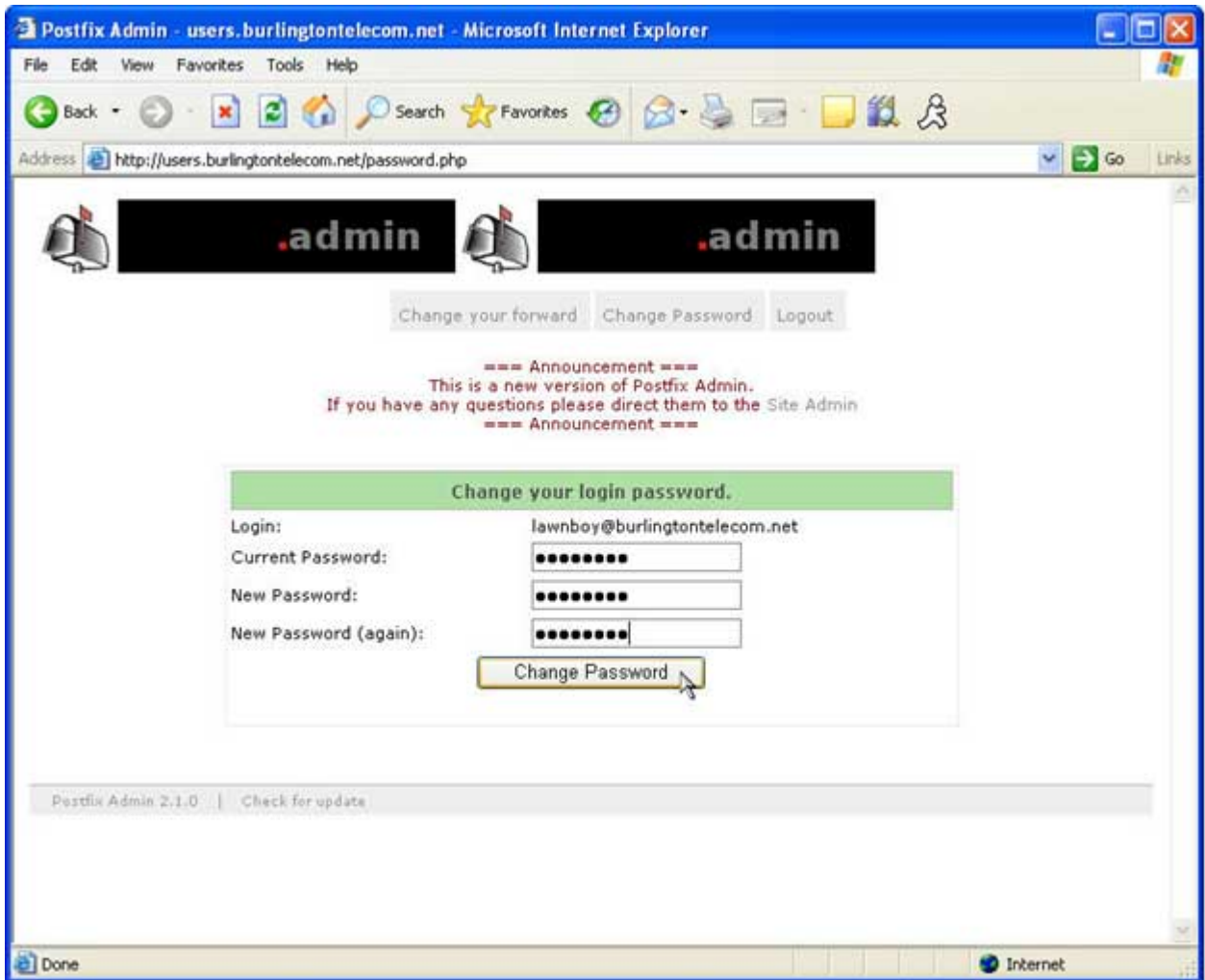


Here's how to change your temporary password:

- Step 1 Open your web browser and navigate to users.burlingtontelecom.net Enter your complete email address and password (case sensitive) in the respective fields and click the "Login" button to continue.



- Step 2 After logging into the web interface, click on the "Change Password" link.





Step 4 You will receive a confirmation that your password has been changed.

Postfix Admin - users.burlingontelecom.net - Microsoft Internet Explorer

File Edit View Favorites Tools Help

Back Forward Stop Home Search Favorites Refresh Print Mail Stop

Address <http://users.burlingontelecom.net/password.php> Go Links

**.admin****.admin**

[Change your forward](#) [Change Password](#) [Logout](#)

=== Announcement ===
This is a new version of Postfix Admin.
If you have any questions please direct them to the Site Admin
=== Announcement ===

Change your login password.

| | |
|-----------------------|------------------------------|
| Login: | lawnboy@burlingontelecom.net |
| Current Password: | <input type="password"/> |
| New Password: | <input type="password"/> |
| New Password (again): | <input type="password"/> |

[Change Password](#)

Your password has been changed!

Postfix Admin 2.1.0 | [Check for updates](#)

Done Internet